

# Lion Refrigerated Multideck Cabinet



Operating Temperatures			Ambient Conditions
DP	MT	FV	
M2 (-1/+7°C)	M1 (-1/+5°C)	H1 (+1/+10°C)	25°C / 60% RH (EN ISO 23953-2)

Available Modules					
Length (mm)	1250	1875	2500	3750	Head
Side panel (mm)	40	40	40	40	40

## Cabinet Type

- Mutlidecks
- Remote Style

## Interior Options

- Mirrored Sides
- Black or White

## Products

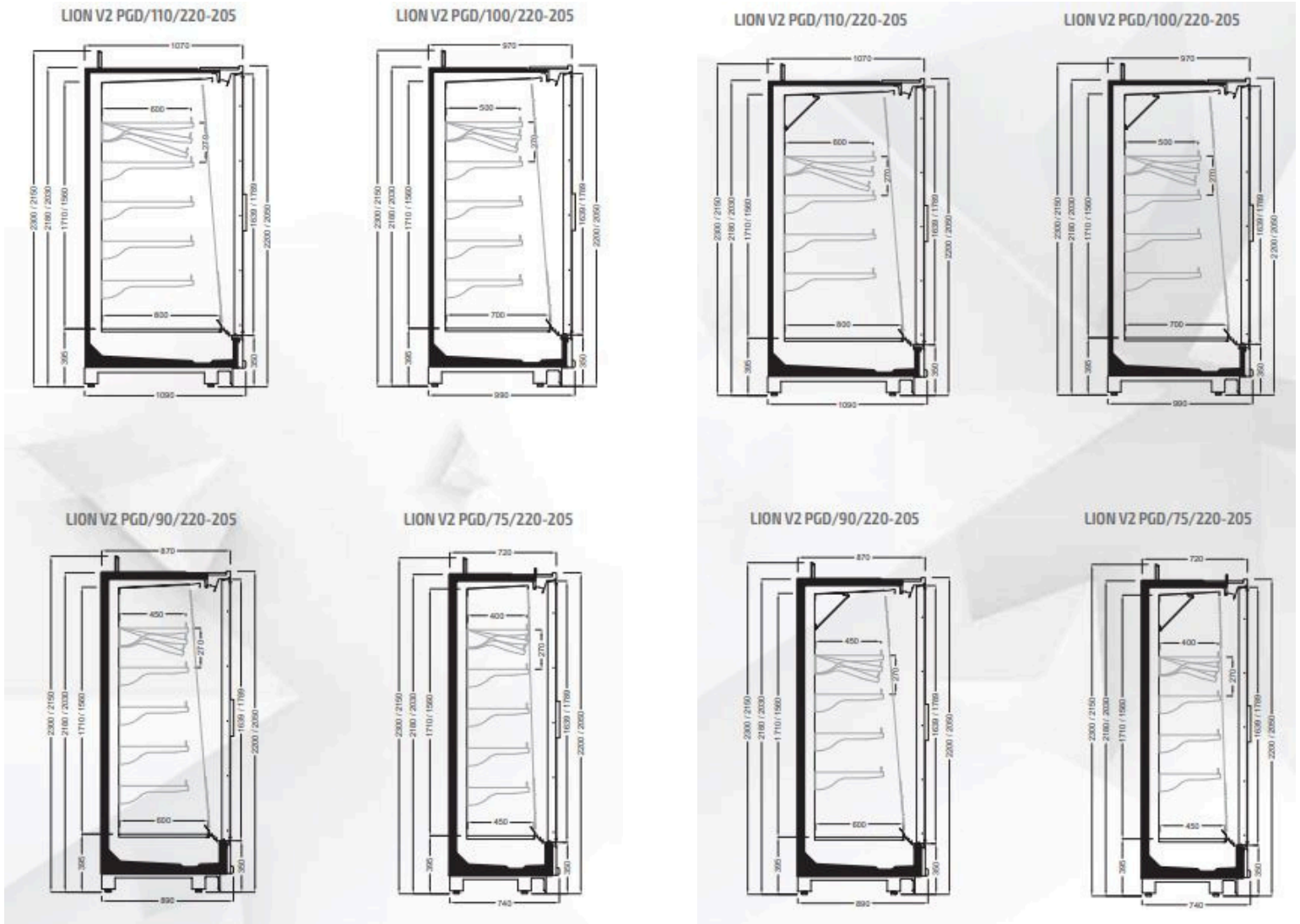
- Dairy Products
- Produce
- Meat Products
- Beer & Wine Stores

**Lion  
Refrigerated  
Multideck Cabinet**

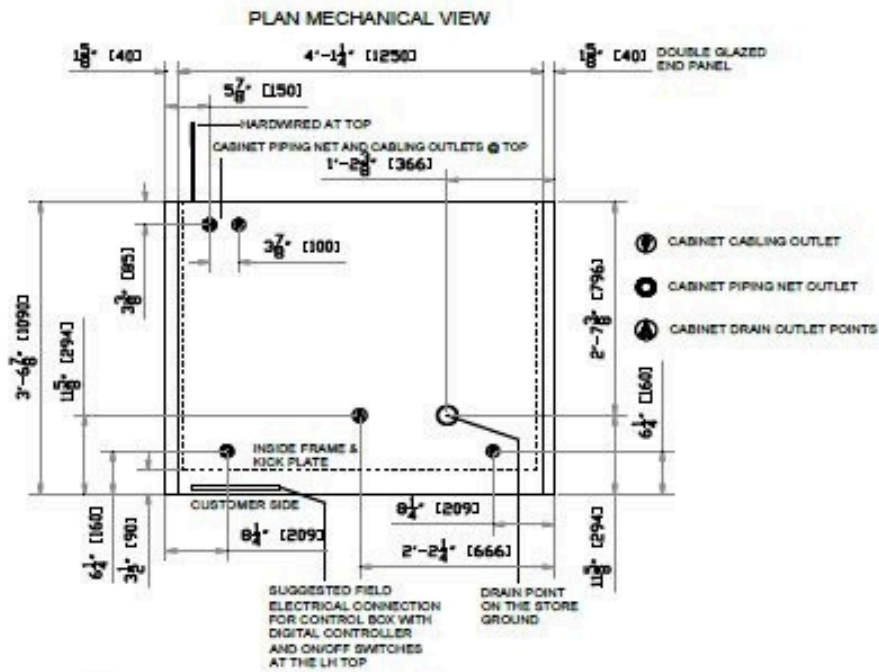
**12' x 86" x 35"**  
**Available Now**

**Includes**

- Roll down Night Curtains
- LED Lighting
- Electronic Energy Efficient Fans
- Coated Epoxy Coil
- **400lb** Shelf Weight Capacity



**The size of the Evaporator Coil will be determined by the product to be displayed in Case**



QTY	DESCRIPTION	PART NUMBER	VOLTAGE	PHASE	AMPS	TOTAL AMPS
1	CANOPY LIGHTINGS	HORIZONTAL, L:1150, UL	24	1	0,30	0,30
3	UNDERSHELF LIGHTING (OPTIONAL)	HORIZONTAL, L:1150, UL	24	1	2,30	2,30
2	EVAPORATOR COIL FAN MOTOR	EC AXIAL UL-Ex	115	1	0,40	0,40

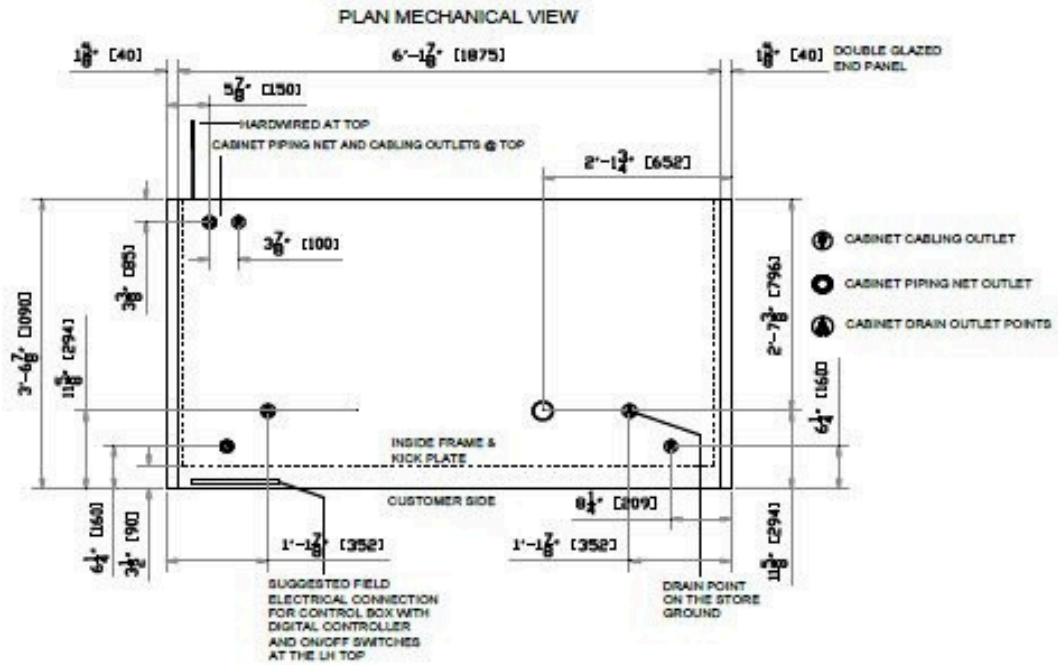
CIRCUIT#1      TOTAL AMPS : 3,40      VOLTAGE : 115/1/60      CONNECTION : HARDWIRED

MODEL:      LION V2 DP 110/205 L:1250      APPLICATION : Dairy/ Beverages      BTUH : 3484      EVAP TEMP : 17 °F

DEFROST:      TIME-OFF, 4/43MIN, 30°F TEMP TERMINATION

\* OPTIONAL COMPONENT LOAD INCLUDED





**LION V2 DP 110/205 L:1875**

QTY	DESCRIPTION	PART NUMBER	VOLTAGE	PHASE	AMPS	TOTAL AMPS
2	CANOPY LIGHTINGS	HORIZONTAL, L:850, UL	24	1	0,75	0,75
10	UNDERSHELF LIGHTING (OPTIONAL)	HORIZONTAL, L:850, UL	24	1	3,75	3,75
3	EVAPORATOR COIL FAN MOTOR	EC AXIAL UL-Ex	115	1	0,60	0,60

CIRCUIT#1 TOTAL AMPS : 5,10 VOLTAGE : 115/1/60 CONNECTION : HARDWIRED

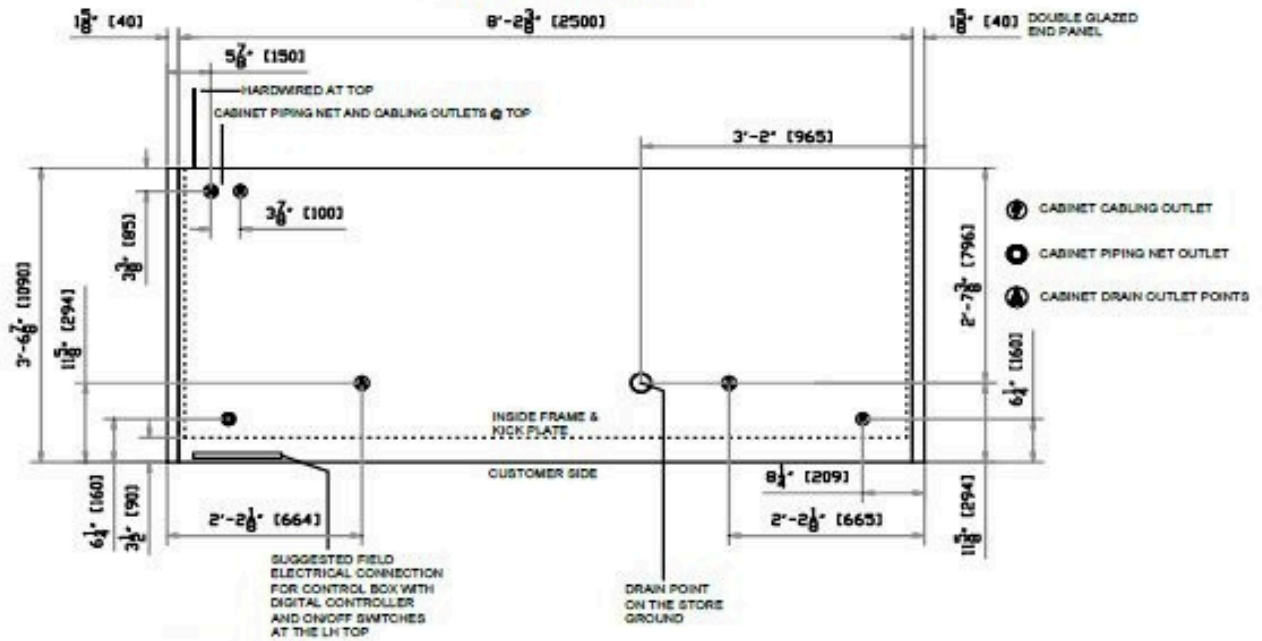
MODEL: LION V2 DP 110/205 L:1875 APPLICATION : Dairy/ Beverages BTUH : 8225 EVAP TEMP : 17 °F

DEFROST: TIME-OFF, 4/45MIN, 50°F TEMP TERMINATION

\* OPTIONAL COMPONENT LOAD INCLUDED



PLAN MECHANICAL VIEW



LION V2 DP 110/205 L:2500

QTY	DESCRIPTION	PART NUMBER	VOLTAGE	PHASE	AMPS	TOTAL AMPS
2	CANOPY LIGHTINGS	HORIZONTAL, L:1150, UL	24	1	1,00	1,00
10	UNDERSHELF LIGHTING (OPTIONAL)	HORIZONTAL, L:1150, UL	24	1	3,00	3,00
4	EVAPORATOR COIL FAN MOTOR	EC AXIAL UL-Ex	115	1	0,80	0,80

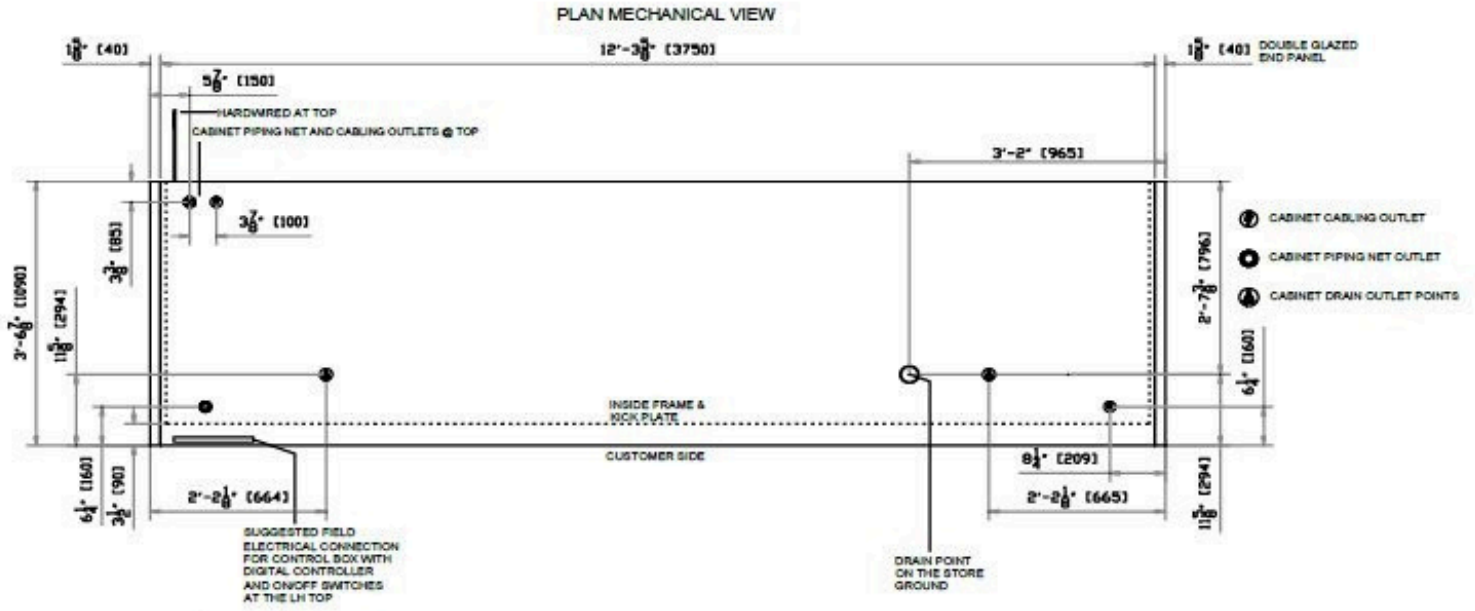
CIRCUIT#1 TOTAL AMPS : 6,80 VOLTAGE : 115/1/60 CONNECTION : HARDWIRED

MODEL: LION V2 DP 110/205 L:2500 APPLICATION : Dairy/ Beverages BTUH : 10967 EVAP TEMP : 17 °F

DEFROST: TIME-OFF, 4/43MIN, 50°F TEMP TERMINATION

\* OPTIONAL COMPONENT LOAD INCLUDED





**LION V2 DP 110/205 L:3750**

QTY	DESCRIPTION	PART NUMBER	VOLTAGE	PHASE	AMPS	TOTAL AMPS
3	CANOPY LIGHTINGS	HORIZONTAL, L:1150, UL	24	1	1,50	1,50
15	UNDERSHELF LIGHTING (OPTIONAL)	HORIZONTAL, L:1150, UL	24	1	7,50	7,50
6	EVAPORATOR COIL FAN MOTOR	EC AXIAL UL-Ex	115	1	1,20	1,20

CIRCUIT#1 TOTAL AMPS : 10,20 VOLTAGE : 115/1/60 CONNECTION : HARDWIRED

MODEL: LION V2 DP 110/205 L:3750 APPLICATION : Dairy/ Beverages BTUH : 16451 EVAP TEMP : 17 °F

DEFROST: TIME-OFF, 4/45MIN, 50°F TEMP TERMINATION

\* OPTIONAL COMPONENT LOAD INCLUDED

